



ENGINEERING EXCELLENCE IN
EVERY STRUCTURE

Mivan Highrise Residential, MSB Commercial, Industrial
Infra Work & Turnkey Contracting Work Contractor



ABOUT OUR COMPANY

We are a professionally managed construction company involved in Construction & Implementing Turnkey Projects. Our company has grown into a diversified service provider across private, public, and MNC sectors over the past 15 years. Backed by promoters with 30+ years of experience, we bring strong expertise in multi-disciplinary project execution.

We undertake Civil, Structural, Mechanical, Electrical, HVAC, Fire Protection, and Public Health Engineering works. Our team combines experience and innovation to deliver cost-effective, high-quality projects on time.

OUR CORE WORKS

CONTRACT WORKS

- ✓ Residential Towers / High Rise MIVAN Structure
- ✓ Commercial Buildings
- ✓ Institutional Buildings
- ✓ Industrial Buildings / Warehouse Buildings
- ✓ Road & infra works.
- ✓ MEP Works

CORE VALUES OF REGAL ENGINEERS

- ✓ Be competitive commercially
- ✓ Provide a safe and healthy workplace
- ✓ Encourage innovation and technological leadership
- ✓ Promote individual responsibility with clear lines of accountability
- ✓ Create a fun, challenging and performance-driven culture
- ✓ Act with integrity and fairness
- ✓ Protect the Environment



MEET OUR TEAMS

MR. PARI

MANAGING DIRECTOR

A Civil Engineering professional with 30+ years of experience leads our team, with a strong background in top firms like L&T, EMAS, URC, and NAPC. He has delivered diverse projects across commercial, IT parks, industrial, institutional, healthcare, and residential sectors. Driven by an entrepreneurial vision, he founded the company in 2014. Under his leadership, the organization has grown into a leading contracting company.

MR. L. VIJAY

ADDITIONAL DIRECTOR (OPERATIONS)

He takes care of all projects executions and operations. He has completed his civil Engineering and worked in a various Corporate sector, Like EMAS, GBL, Etc., More than 20 years Experience. He has executed various multistoried commercial industrial and residential vilas various locations in south India. He is key personal and taking care all our Civil - Projects Operations.

MR.M. SIVAKUMAR

HEAD (FINANCE AND ACCOUNTS)

A commerce graduate with 29+ years of experience in finance and accounts across various sectors in top-level management. He manages the accounts team, project finance, budgeting, and cash flow. Associated with the organization and MD for over 24 years. He handles all commercial matters including audit, banking, finance, and ROC compliance.



REACH THE MILESTONE

We care to achieve the set targets on time. We ensure complete customer satisfaction by promptly responding to their needs, & requirements.

ENDURE HUMAN RESOURCE

Employees are our most important asset. We care for our employee's well-being & provide them the best working environment.

GOAL ACHIEVE THE MILESTONES

We care to achieve the set targets on time without compromise on quality and safety.

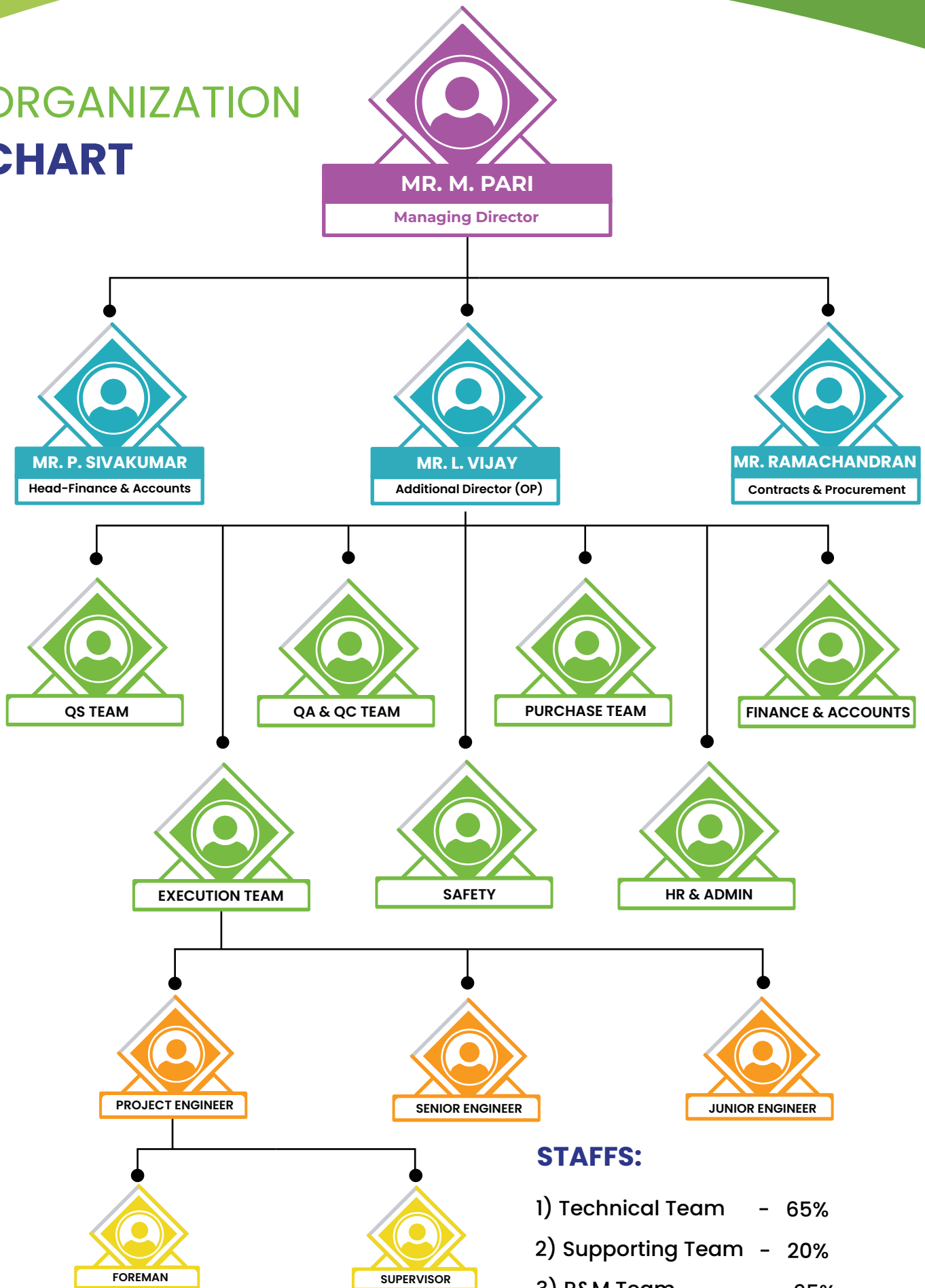
ALL THRIVE FOR BEAT

Our goal, as a team, is to achieve sustained business growth, Client relationship, & repeat orders & always be innovative.

LATEST TECHNOLOGY

Providing innovative & cost-effective solutions in engineering & construction with latest technology.

ORGANIZATION CHART



STAFFS:

- 1) Technical Team - 65%
- 2) Supporting Team - 20%
- 3) P&M Team - 65%
- 4) Managerial Team - 5%

QUALITY POLICY

- ✓ Building Long term relationship with the customer and strategic business partners based on the shared objectives to achieve improvements in safety, quality, time and cost.
- ✓ Providing innovative & cost-effective solutions in engineering & construction with the latest technologies.
- ✓ Planning systems for effective implementation.
- ✓ Providing training among all staff employees to improve their technical skills.
- ✓ Make continual improvement in quality, delivery and performance.
- ✓ Provision for a safe working environment.

QUALITY OBJECTIVES

- ✓ Enhance the capabilities of our employees through continuous improvement.
- ✓ Provide work instruction for all activities of work during execution..
- ✓ Conduct developmental programs to permeate our systems down to all.
- ✓ Create a sense of belonging through teamwork, dedication & commitment.
- ✓ Upgrade the existing working methods through internal & external sources.
- ✓ Reward employees for suggesting cost-effective innovations.

OUR SAFETY PROCEDURES

- ✓ Identifying an exclusive safety officer in each site.
- ✓ Insisting on compulsory use of safety wares.
- ✓ Motivating workers & vendors to ensure safeworking conditions.
- ✓ Conducting on-site safety awareness programs.
- ✓ Barricading open cut & excavated pits.
- ✓ Proper installation of electrical connections.
- ✓ Proper scaffolding system with adequate cross bracing.
- ✓ Safe working platform & approach ladders with handrails.
- ✓ Providing adequate illumination at work areas, passage & stairs.

S.N	DESCRIPTION	UNIT	
MAJOR MACHINERY			
1	JCB - EXCAVATOR	NO	02
2	VIBRO MAX ROLLER-10 TON CAPACITY	NO	02
3	DIESEL GENERATORS-5Kva; 10Kva; 25Kva; 40Kva; 50Kva; 63Kva	NO	05
4	TRACTOR WITH TRAILERS	NO	04
5	WATER TANKER	NO	04
6	WALK BEHIND ROLLER	NO	05
7	BAR BENDING MACHINES	NO	20
8	BAR CUTTING MACHINES	NO	20
9	DEWATERING PUMP HEAVY DUTY	NO	20
10	TOWER CRANE - 50 METER BOOM	NO	02
11	MATERIAL TRANSPORT VEHICLE 5-10MT CAPACITY	NO	04
VEHICLE			
1	VEHICLES 4 Wheelers	NO	06
2	VEHICLES 2 Wheelers	NO	08
3	AMBULANCE	NO	01
QA & QC LAB MATERIALS			
1	CUBE TESTING MACHINE	NO	10
2	LAB EQUIPMENTS	LOT	10
SURVEYING INSTRUMENTS			
1	TOTAL STATION NOS 4	NOS	04
2	AUTOMATIC LEVELLING INSTRUMENT	NO	10
FORMWORK MATERIALS			
1	FORM WORK MATERIALS	SOFT	2,50,000
SCAFFOLDING MATERIALS			
1	APS & CUPLOCK MATERIAL	SOFT	2,00,000

OUR ARCHITECTS & PMC



OUR CLIENTS

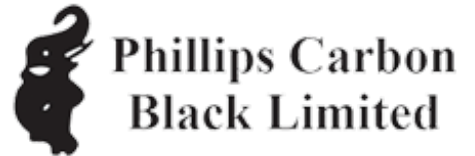
RESIDENTIAL



COMMERCIAL



INDUSTRIAL



Mahindra



INFRA / REAL ESTATE



ONGOING PROJECTS



ONGOING PROJECTS

CASAGRAND - MERCURY



COMPLETED PROJECTS

RESIDENTIAL



Newry@Adora

Krishna Construction
@The Meadows



Casagrand@Elan



COMPLETED PROJECTS

COMMERCIAL

SRM@Kattankulathur



Ticel Bio Park@Taramani



L&T Water Technology
@Kanchipuram



COMPLETED PROJECTS

INDUSTRIAL

Indo-mim



Indospace



MRV - GEVTECH



Value Space Logistics



COMPLETED PROJECTS

INFRA



Indo-mim

Vishay Precision Group



House of Hiranandani@Navalur



SITE INFRASTRUCTURE



SITE OFFICE

QA & QC



SCREENING



TOOL BOX





REGAL ENGINEERS & CONTRACTORS PVT.LTD

No.: 3A, 2nd floor, Kundradhur Main Road,
Gerugambakkam, Chennai-600122.

Phone: +91 98410 44995/ 044 23820996

Email: pari@regalindia.in, ho@regalindia.in

Web: www.regalindia.in

ANDHRA PRADESH

FLAT NO.1/1, VKRY COLONY,
CHINNAPANDURU, VARADAIHPALEM,
CHITTOOR, NAGALAPURAM,
TIRUPATHI, AP- 517589.

KARNATAKA

NO. 8, HORAMAVU AGRA POST,
RAJANNA LAYOUT, BENGALURU,
BANGALURU URBAN,
KARNATAKA - 560043.

UPDATE SOON

-  Telangana
-  Maharashtra



www.regalindia.in